



- New modern design.
- Available in 4" and 8" centers and with 1 hole configuration.
- Available in White and Cashmere.
- Mounting wall bracket included.
- All Western products are IAPMO tested and meet or exceed standards. 

For more information please contact us toll-free:

877-WPWORKS (979-6757)

US Sales and Service

Phone 562.229.0910 • Fax 562.229.0930

www.westernpottery.com • Email: info@westernpottery.com

14405 Best Avenue • Norwalk, California 90650

L270 / P270

PHYSICAL PROPERTIES

Model: L270 / P270

Height: 34" (864mm)

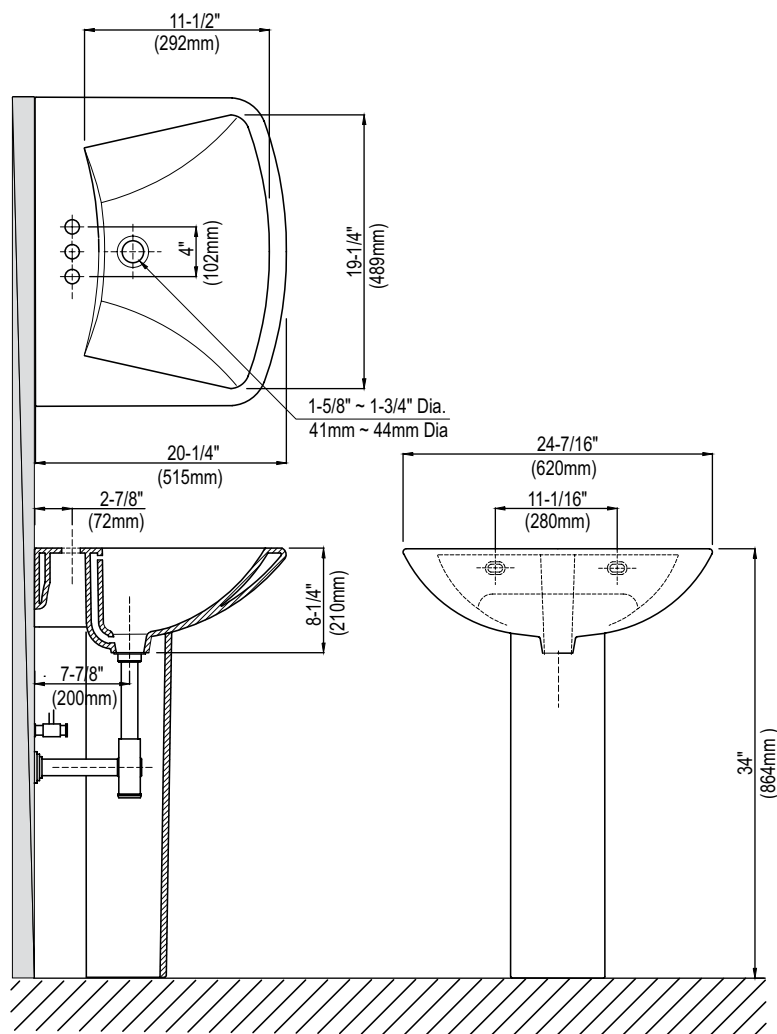
Width: 24-7/16" (620mm)

Depth: 20-1/4" (515mm)

Mounting Hardware: Wall bracket included

Shipping Weight: 38.68 lbs. Lav
27.55 lbs. Ped

Shipping Cube: 2.60 ft. Lav
1.23 ft. Ped



IMPORTANT: Dimensions are nominal and may vary within the range of tolerances established by ASME A112.19.2 / CSA B45.1. These measurements are subject to change without notice.

For more information please contact us toll-free:

877-WPWORKS (979-6757)

www.westernpottery.com • Email: info@westernpottery.com